

1

2

3

4

5

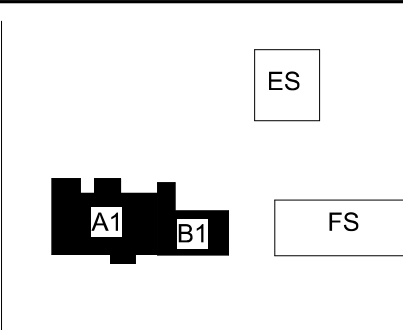
6

GGLO

SEATTLE | LOS ANGELES | BOISE
gglo.com

wsp

WSP USA Inc.
1444 S Entertainment Ave., Suite 300
Boise, ID 83709
208-563-8110
wsp.com

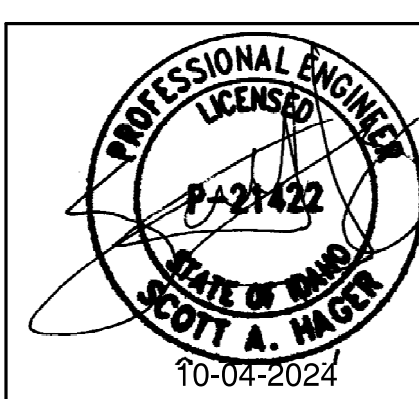


KEY PLAN

PROJECT:
**Elmore Co Admin Bldg -
Tenant Improvement**

PROJECT ADDRESS:
**ELMORE COUNTY PUBLIC
SERVICES BUILDING 1**

OWNER:
**SHELLEY ESSL, COUNTY CLERK
ELMORE COUNTY
150 SOUTH 4TH EAST, SUITE 3
MOUNTAIN HOME, IDAHO 83647**



APPROVAL STAMPS

1 10/04/24 ADD-1

MARK DATE DESCRIPTION

REVISIONS

A 09/06/2024 PERMIT/BID SET

MARK DATE DESCRIPTION

ISSUE INFORMATION

PROJECT NO.: **US0027344.2784**

PRINCIPAL IN CHARGE: **KH**

PROJECT MANAGER: **RS**

OWNER APPROVAL:

SHEET TITLE
**LIGHTING DEMOLITION
PLAN - CRAWL SPACE**

SHEET NO.

E-100

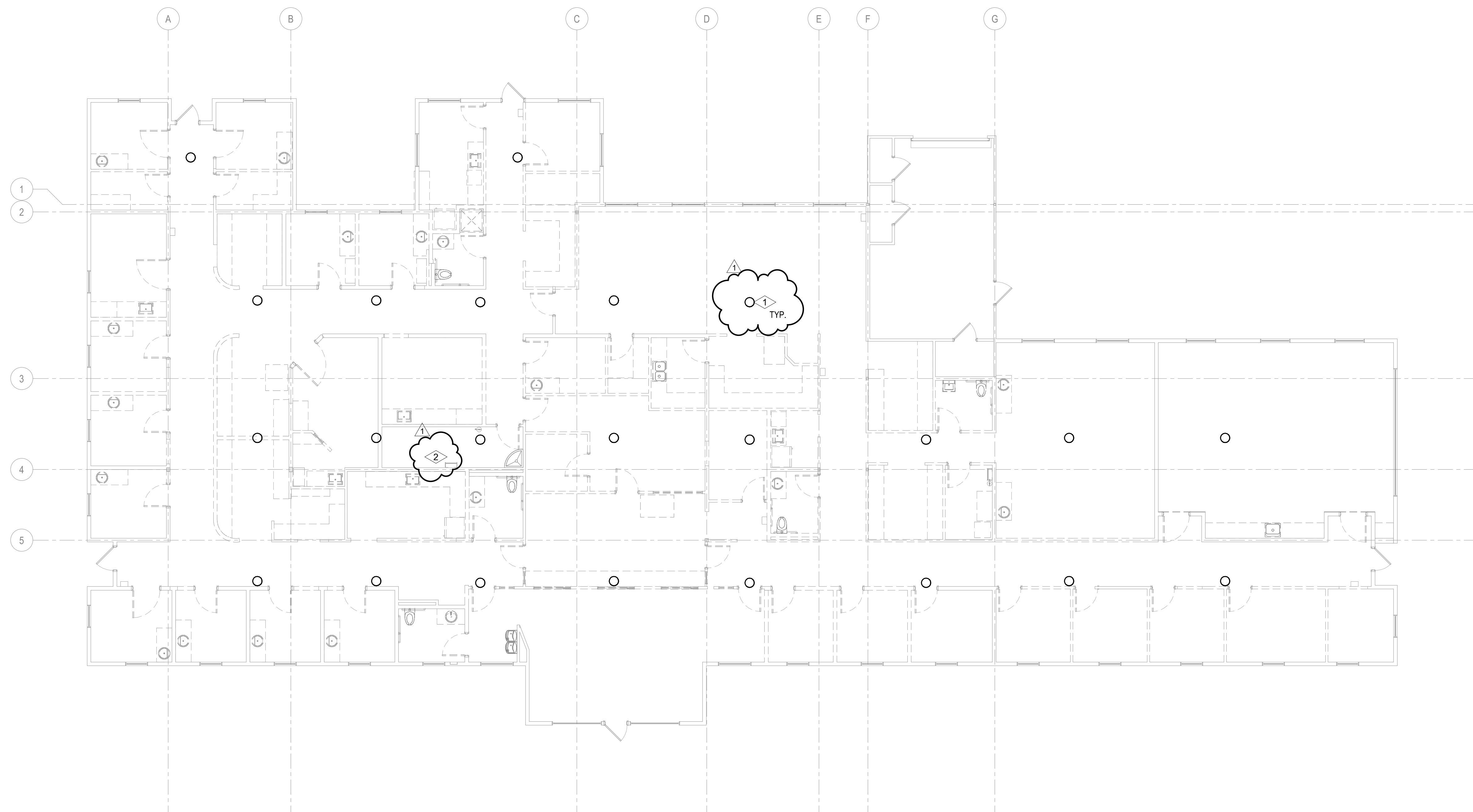
COPYRIGHT GGLO. ALL RIGHTS RESERVED.
ORIGINAL SHEET SIZE IS 30"x42"

NUMBERED NOTES:

- 1 PORCELAIN LAMP HOLDER EXISTING TO REMAIN. SCREW IN LIGHT BULB EXISTING TO BE REMOVED. TYPICAL OF ALL CRAWL SPACE LIGHTING.
- 2 PILOT SWITCH THAT IS CONTROLLING CRAWL SPACE LIGHTING IS EXISTING TO REMAIN.

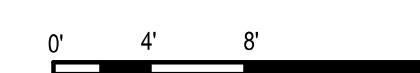
SHEET NOTES:

- A. FIELD VERIFY EXISTING CONDITIONS AND IDENTIFY THE CIRCUITS AVAILABLE FOR TI SPACE.
- B. EXAMINE THE SITE AND VERIFY ALL EXISTING CONDITIONS PRIOR TO WORK. COORDINATE AREAS OF DEMOLITION WITH ARCHITECT/ENGINEER IN FIELD PRIOR TO ACTUAL DEMOLITION.
- C. WHERE AN EXISTING CIRCUIT IS INTERRUPTED BY REMOVAL OF A DEVICE OR FIXTURE FROM THAT CIRCUIT, PROVIDE ADDITIONAL CONDUIT AND WIRE TO RESTORE SERVICE TO THE REMAINING DEVICES AND FIXTURES ON THAT CIRCUIT.
- D. WHERE DEVICES OR EQUIPMENT ARE TO BE REMOVED, REMOVE ALL ASSOCIATED CONDUITS, CONDUCTORS, J-BOXES AND SUPPORTS. CONTRACTOR MAY UTILIZE EXISTING CONDUIT TO ROUTE NEW WIRE PROVIDED IT COMPLIES WITH CURRENT NEC REQUIREMENT.
- E. WHERE EXISTING DEVICES ARE TO REMAIN BRANCH CIRCUIT CONDUCTORS, CONDUITS AND J-BOXES SHALL REMAIN AS IS. EXTEND CIRCUIT TO NEW DEVICE LOCATIONS IF NECESSARY.



1 LIGHTING DEMOLITION PLAN - CRAWL SPACE

1/8" = 1'-0"



PERMIT/BID SET - 9/16/2024

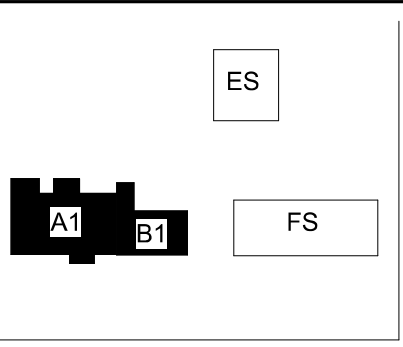
PROJECT DATE/TIME: 10/04/24 12:13:59PM

NUMBERED NOTES:

- 1 RECEPTACLE EXISTING TO BE MODIFIED. CABLING AND INFRASTRUCTURE TO REMAIN. DISCONNECT EXISTING RECEPTACLE AND REPLACE WITH NEW RECEPTACLE TO MATCH NEW AREAS. PROVIDE WITH NEW COVER PLATE TO MATCH NEW AREAS.
- 2 ALL ELECTRICAL PANELS IN THIS ROOM ARE EXISTING TO REMAIN.
- 3 WALL MOUNTED BUILDING DISCONNECT EXISTING TO REMAIN.
- 4 ALL RECEPTACLES IN THIS ROOM EXISTING TO BE MODIFIED. CABLING AND INFRASTRUCTURE TO REMAIN. DISCONNECT EXISTING RECEPTACLE AND REPLACE WITH NEW RECEPTACLE TO MATCH NEW AREAS. PROVIDE WITH NEW COVER PLATE TO MATCH NEW AREAS.

SHEET NOTES:

- A. FIELD VERIFY EXISTING CONDITIONS AND IDENTIFY THE CIRCUITS AVAILABLE FOR TI SPACE.
- B. EXAMINE THE SITE AND VERIFY ALL EXISTING CONDITIONS PRIOR TO WORK. COORDINATE AREAS OF DEMOLITION WITH ARCHITECT/ENGINEER IN FIELD PRIOR TO ACTUAL DEMOLITION.
- C. WHERE AN EXISTING CIRCUIT IS INTERRUPTED BY REMOVAL OF A DEVICE OR FIXTURE FROM THAT CIRCUIT, PROVIDE ADDITIONAL CONDUIT AND WIRE TO RESTORE SERVICE TO THE REMAINING DEVICES AND FIXTURES ON THAT CIRCUIT.
- D. WHERE DEVICES OR EQUIPMENT ARE TO BE REMOVED, REMOVE ALL ASSOCIATED CONDUITS, CONDUCTORS J-BOXES AND SUPPORTS. CONTRACTOR MAY UTILIZE EXISTING CONDUIT TO ROUTE NEW WIRE PROVIDED IT COMPLIES WITH CURRENT NEC REQUIREMENT.
- E. WHERE EXISTING DEVICES ARE TO REMAIN BRANCH CIRCUIT CONDUCTORS, CONDUITS AND J-BOXES SHALL REMAIN AS IS. EXTEND CIRCUIT TO NEW DEVICE LOCATIONS IF NECESSARY.
- F. ALL DEVICES ON THIS SHEET ARE EXISTING TO BE REMOVED, UNLESS NOTED OTHERWISE.



KEY PLAN

PROJECT:

**Elmore Co Admin Bldg -
Tenant Improvement**

PROJECT ADDRESS:

**ELMORE COUNTY PUBLIC
SERVICES BUILDING 1**

OWNER:

**SHELLEY ESSL, COUNTY CLERK
ELMORE COUNTY
150 SOUTH 4TH EAST, SUITE 3
MOUNTAIN HOME, IDAHO 83647**



APPROVAL STAMPS

MARK	DATE	DESCRIPTION
1	10/06/24	ADD-1

REVISIONS

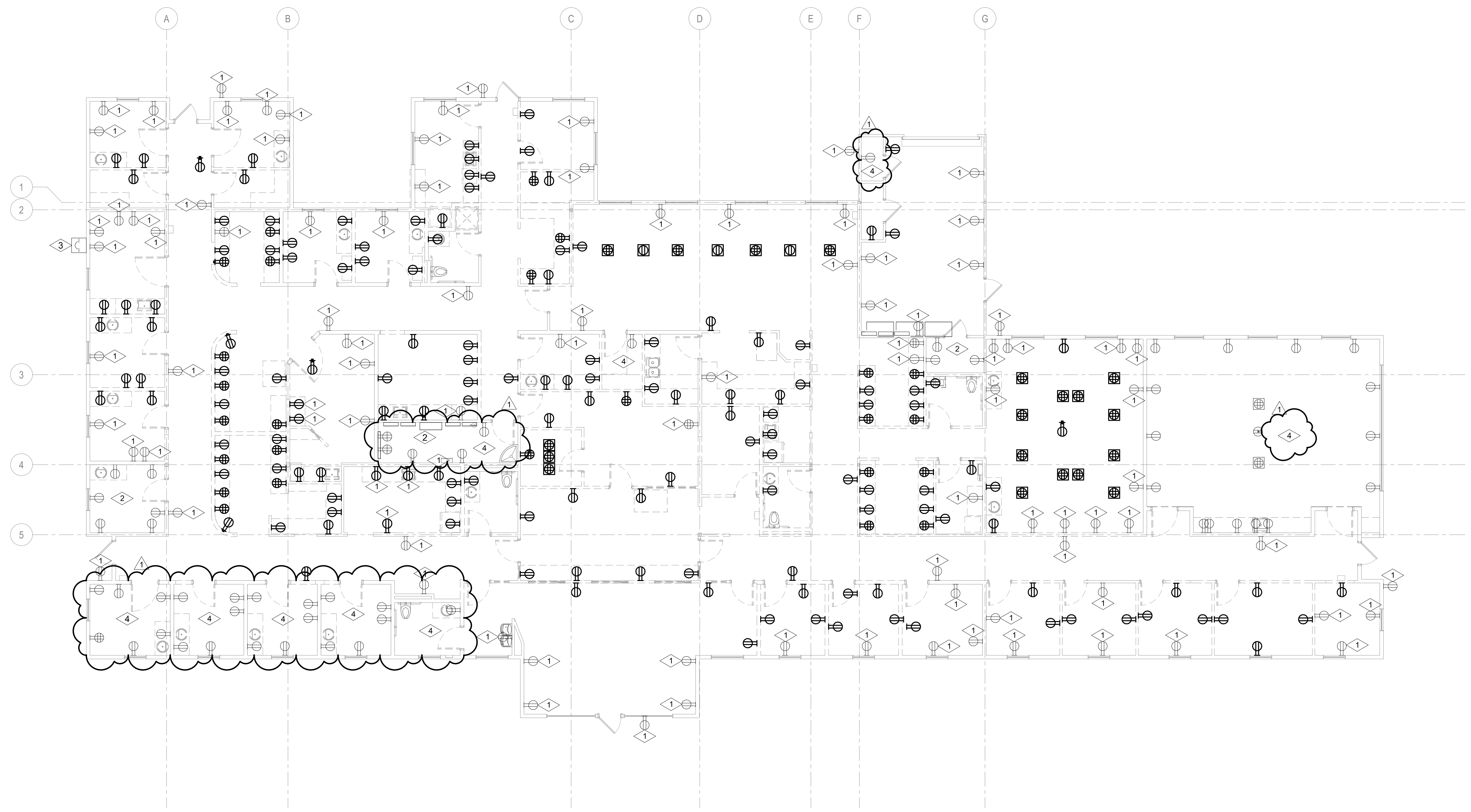
MARK	DATE	DESCRIPTION
A	09/06/2024	PERMIT/BID SET

ISSUE INFORMATION

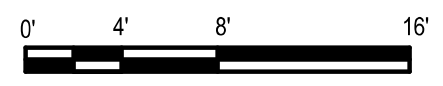
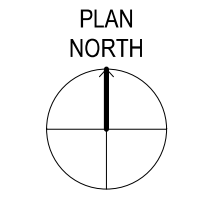
PROJECT NO.: **US0027344.2784**
 PRINCIPAL IN CHARGE: **KH**
 PROJECT MANAGER: **RS**
 OWNER APPROVAL:

SHEET TITLE
**ELECTRICAL POWER
 DEMOLITION PLAN -
 LEVEL 1**

SHEET NO.
E-101



1 ELECTRICAL DEMOLITION PLAN - LEVEL 1
1/8" = 1'-0"



PERMIT/BID SET - 9/16/2024

E

D

C

B

A

E

D

C

B

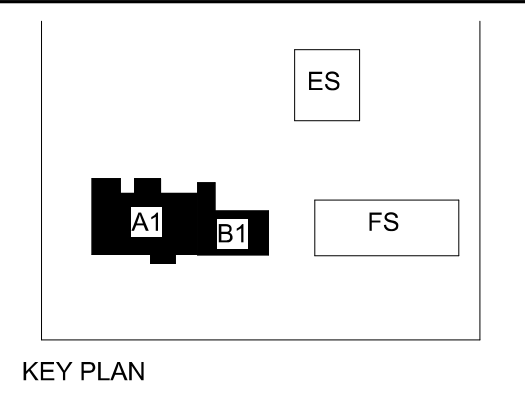
A

1 2 3 4 5 6

NUMBERED NOTES:

1 EXISTING EXTERIOR DOWNLIGHT TO REMAIN. LAMPING TO BE RETROFITTED WITH LED LIGHT SOURCE.

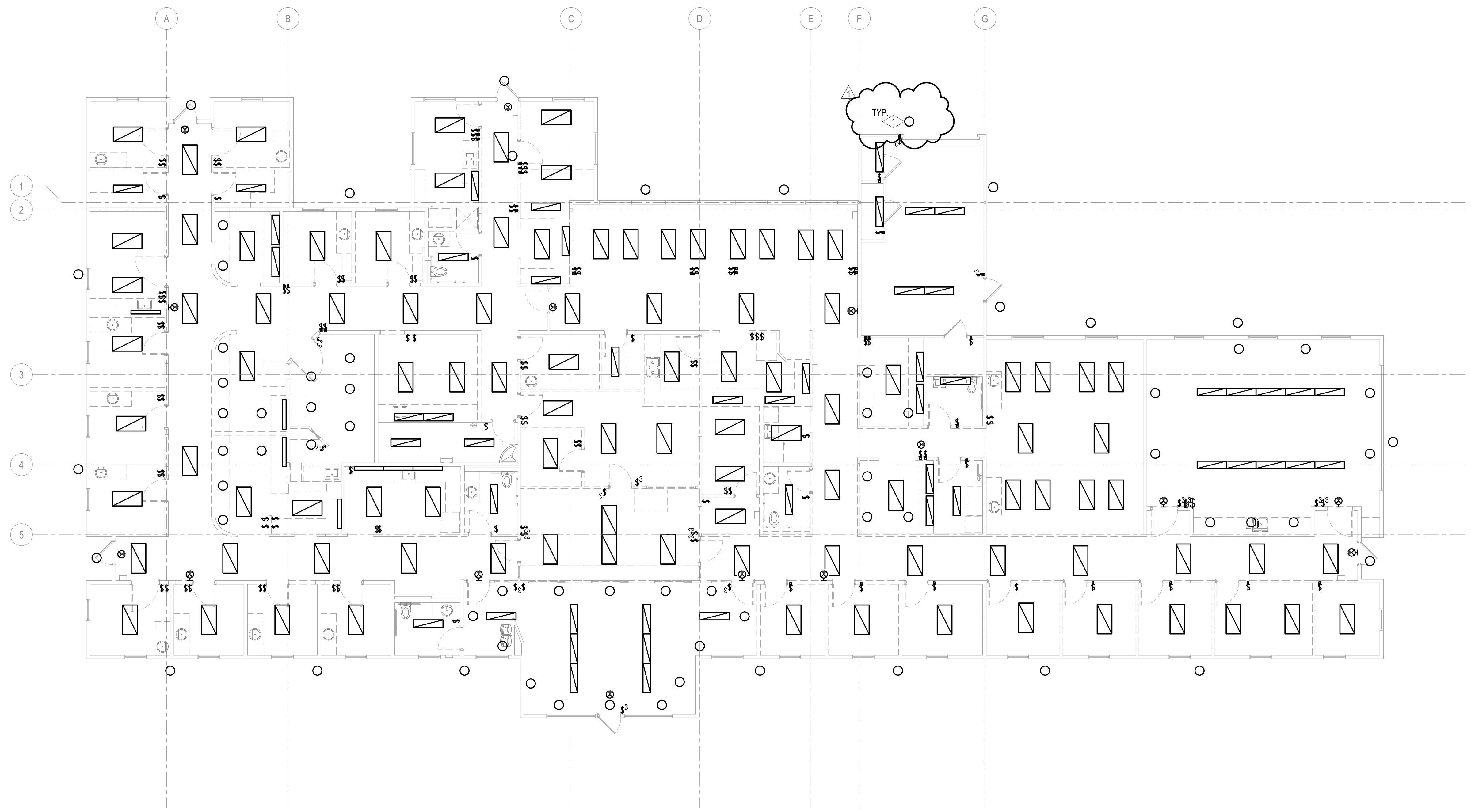
- SHEET NOTES:**
- B. EXAMINE THE SITE AND VERIFY ALL EXISTING CONDITIONS PRIOR TO WORK. COORDINATE AREAS OF DEMOLITION WITH ARCHITECT/ENGINEER IN FIELD PRIOR TO ACTUAL DEMOLITION.
 - C. WHERE AN EXISTING CIRCUIT IS INTERRUPTED BY REMOVAL OF A DEVICE OR FIXTURE FROM THAT CIRCUIT, PROVIDE ADDITIONAL CONDUIT AND WIRE TO RESTORE SERVICE TO THE REMAINING DEVICES AND FIXTURES ON THAT CIRCUIT.
 - D. WHERE DEVICES OR EQUIPMENT ARE TO BE REMOVED, REMOVE ALL ASSOCIATED CONDUITS, CONDUCTORS, J-BOXES AND SUPPORTS. CONTRACTOR MAY UTILIZE EXISTING CONDUIT TO ROUTE NEW WIRE PROVIDED IT COMPLIES WITH CURRENT NEC REQUIREMENT.
 - E. WHERE EXISTING DEVICES ARE TO REMAIN BRANCH CIRCUIT CONDUCTORS, CONDUITS AND J-BOXES SHALL REMAIN AS IS. EXTEND CIRCUIT TO NEW DEVICE LOCATIONS IF NECESSARY.
 - F. ALL LIGHTING FIXTURES AND CONTROLS ARE EXISTING TO BE REMOVED, UNLESS NOTED OTHERWISE.



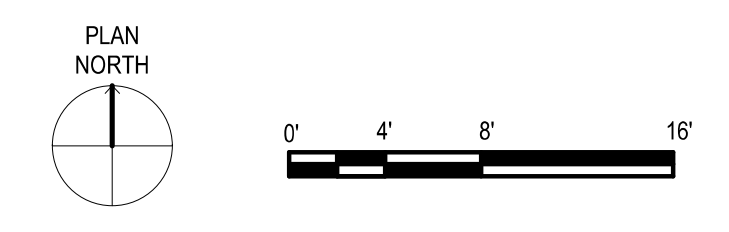
PROJECT:
Elmore Co Admin Bldg - Tenant Improvement

PROJECT ADDRESS:
ELMORE COUNTY PUBLIC SERVICES BUILDING 1

OWNER:
**SHELLEY ESSL, COUNTY CLERK
ELMORE COUNTY
150 SOUTH 4TH EAST, SUITE 3
MOUNTAIN HOME, IDAHO 83647**



1 LIGHTING DEMOLITION PLAN - LEVEL 1
1/8" = 1'-0"



APPROVAL STAMPS

MARK	DATE	DESCRIPTION
1	10/04/24	ADD-1

ISSUE INFORMATION

MARK	DATE	DESCRIPTION
A	09/06/2024	PERMIT/BID SET

PROJECT NO.: **US0027344.2784**
 PRINCIPAL IN CHARGE: **KH**
 PROJECT MANAGER: **RS**
 OWNER APPROVAL:

SHEET TITLE:
LIGHTING DEMOLITION PLAN - LEVEL 1

SHEET NO.:
E-102

1 2 3 4 5 6

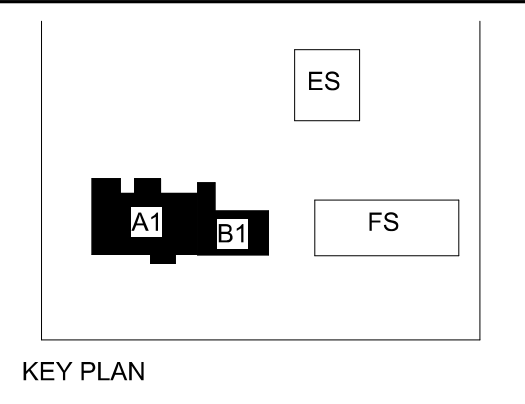
E
D
C
B
A

E
D
C
B
A

PERMIT/BID SET - 9/16/2024

- NUMBERED NOTES:**
- 1 EXHAUST FAN EXISTING TO REMAIN.
 - 2 PANELBOARD AND RECEPTACLE EXISTING TO REMAIN.
 - 3 NEW ROOF TOP UNIT TO REPLACE EXISTING ONE OF SAME SIZE. REUSE EXISTING RACEWAY. PROVIDE NEW CIRCUITING OF THE SAME SIZE TO EXISTING BREAKER IN PANEL RTU. REPLACE EXISTING BREAKER WITH NEW BREAKER IF EXISTING SIZE DOES NOT MATCH MANUFACTURER RECOMMENDATION. UP SIZE CABLING AS REQUIRED.
 - 4 ROOF TOP UNIT EXISTING TO BE REMOVED. REMOVE CABLING BACK TO SOURCE. EXISTING RACEWAY TO REMAIN FOR NEW CABLING. FIELD VERIFY EXACT LOCATION.

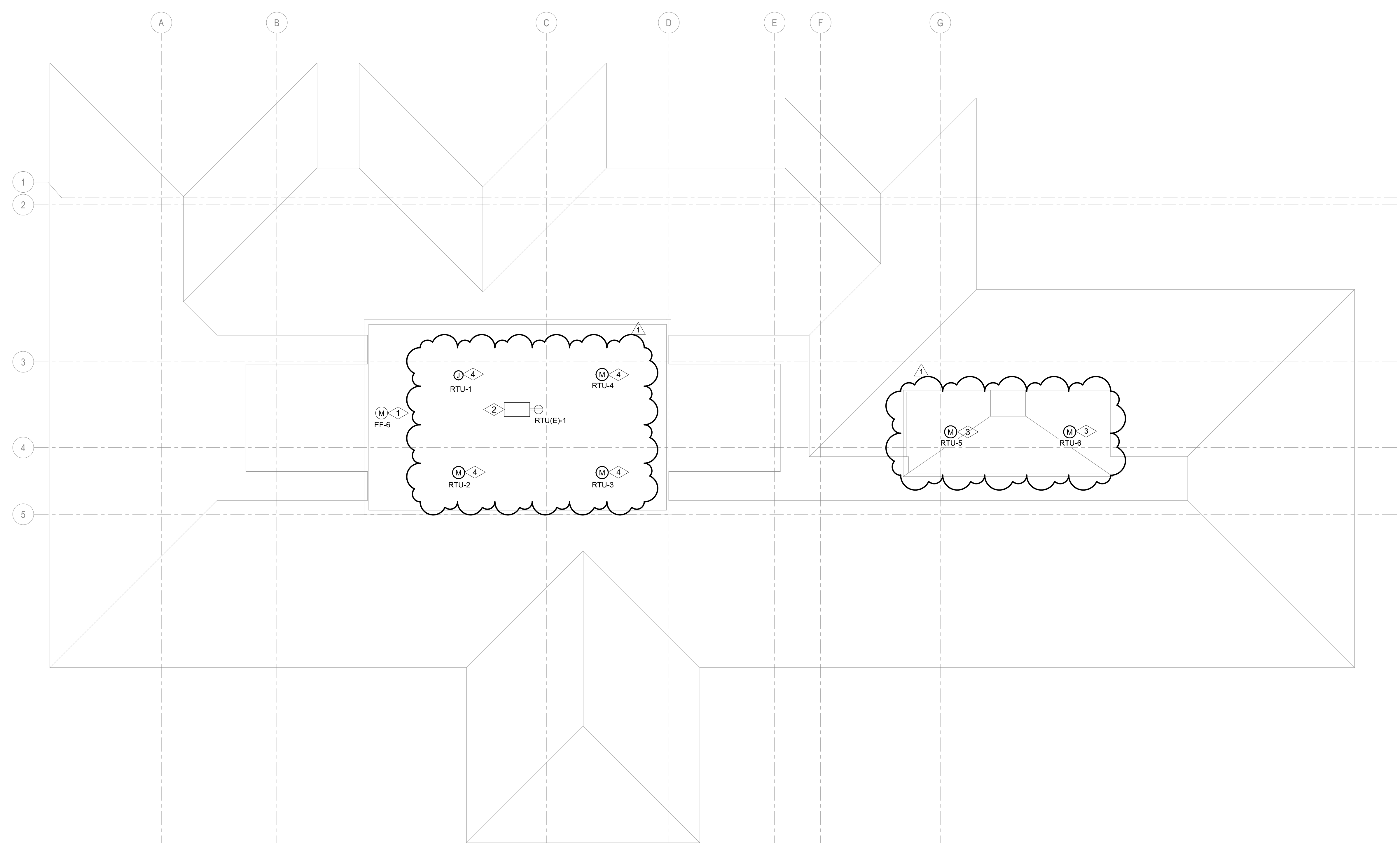
- SHEET NOTES:**
- A. FIELD VERIFY EXISTING CONDITIONS AND IDENTIFY THE CIRCUITS AVAILABLE FOR TI SPACE.
 - B. EXAMINE THE SITE AND VERIFY ALL EXISTING CONDITIONS PRIOR TO WORK. COORDINATE AREAS OF DEMOLITION WITH ARCHITECT/ENGINEER IN FIELD PRIOR TO ACTUAL DEMOLITION.
 - C. WHERE AN EXISTING CIRCUIT IS INTERRUPTED BY REMOVAL OF A DEVICE OR FIXTURE FROM THAT CIRCUIT, PROVIDE ADDITIONAL CONDUIT AND WIRE TO RESTORE SERVICE TO THE REMAINING DEVICES AND FIXTURES ON THAT CIRCUIT.
 - D. WHERE DEVICES OR EQUIPMENT ARE TO BE REMOVED, REMOVE ALL ASSOCIATED CONDUITS, CONDUCTORS J-BOXES AND SUPPORTS. CONTRACTOR MAY UTILIZE EXISTING CONDUIT TO ROUTE NEW WIRE PROVIDED IT COMPLIES WITH CURRENT NEC REQUIREMENT.
 - E. WHERE EXISTING DEVICES ARE TO REMAIN BRANCH CIRCUIT CONDUCTORS, CONDUITS AND J-BOXES SHALL REMAIN AS IS. EXTEND CIRCUIT TO NEW DEVICE LOCATIONS IF NECESSARY.



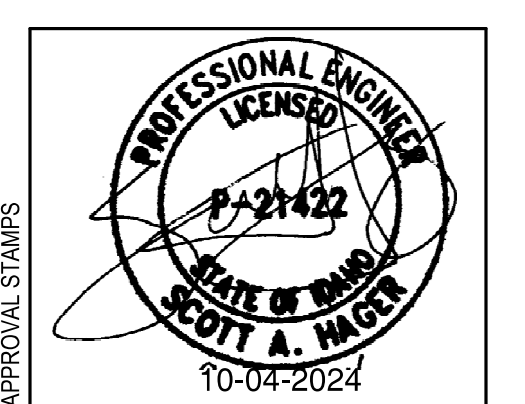
PROJECT:
Elmore Co Admin Bldg - Tenant Improvement

PROJECT ADDRESS:
ELMORE COUNTY PUBLIC SERVICES BUILDING 1

OWNER:
**SHELLEY ESSL, COUNTY CLERK
ELMORE COUNTY
150 SOUTH 4TH EAST, SUITE 3
MOUNTAIN HOME, IDAHO 83647**



1 ELECTRICAL DEMOLITION PLAN - ROOF
1/8" = 1'-0"



APPROVAL STAMPS

MARK	DATE	DESCRIPTION
1	10/06/24	ADD-1

REVISIONS

ISSUE INFORMATION

MARK	DATE	DESCRIPTION
A	09/06/2024	PERMIT/BID SET

PROJECT NO.: **US0027344.2784**
 PRINCIPAL IN CHARGE: **KH**
 PROJECT MANAGER: **RS**
 OWNER APPROVAL:

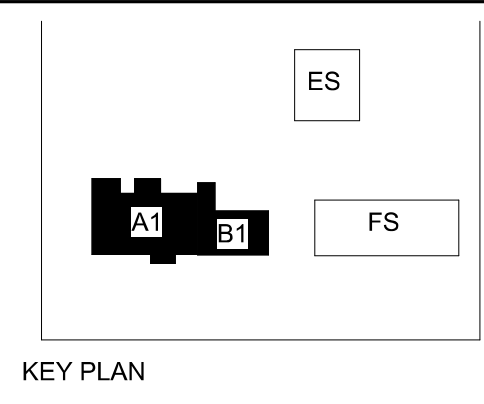
SHEET TITLE
ELECTRICAL DEMOLITION PLAN - ROOF

SHEET NO.
E-104

PERMIT/BID SET - 9/16/2024

- NUMBERED NOTES:**
- PANELBOARD AND RECEPTACLE EXISTING TO REMAIN.
 - EXHAUST FAN EXISTING TO REMAIN.
 - ROOF TOP UNIT EXISTING TO BE REMOVED. REMOVE CABLING BACK TO SOURCE. EXISTING RACEWAY TO REMAIN FOR NEW CABLING. FIELD VERIFY EXACT LOCATION.
 - NEW ROOF TOP UNIT TO REPLACE EXISTING ONE OF SAME SIZE. REUSE EXISTING RACEWAY. PROVIDE NEW CIRCUITING OF THE SAME SIZE TO EXISTING BREAKER IN PANEL RTU. REPLACE EXISTING BREAKER WITH NEW BREAKER IF EXISTING SIZE DOES NOT MATCH MANUFACTURER RECOMMENDATION. UP SIZE CABLING AS REQUIRED.

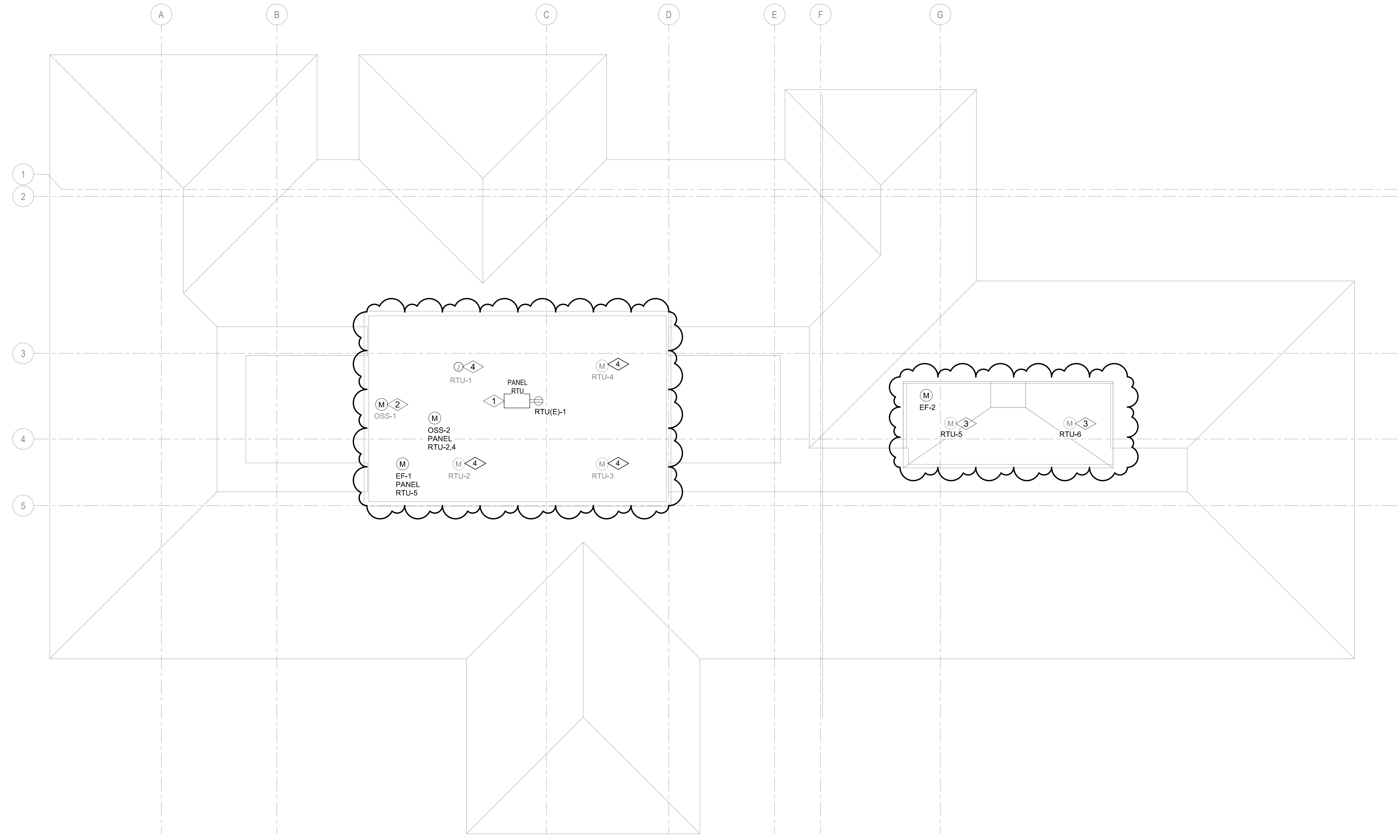
- SHEET NOTES:**
- DRAWINGS ARE INTENDED TO SHOW GENERAL ARRANGEMENT, DESIGN, AND EXTENT OF WORK AND ARE DIAGRAMMATIC. DRAWINGS ARE NOT INTENDED TO SHOW EXACT LOCATIONS EXCEPT WHERE DIMENSIONS ARE SHOWN. ELECTRICAL WORK IS SHOWN ON PLANS USING STANDARD INDUSTRY SYMBOLS. BEFORE ORDERING MATERIALS OR DOING WORK, VERIFY MEASUREMENTS PERTAINING THERETO AND ASSUME RESPONSIBILITY THEREFOR. ANY SUBSTANTIAL DIFFERENCES BETWEEN DRAWINGS AND CONDITIONS IN THE FIELD SHALL BE SUBMITTED TO THE CONSTRUCTION MANAGER FOR CONSIDERATION BEFORE PROCEEDING WITH WORK.
 - WORK PERFORMED INCLUDES LABOR, MATERIALS, AND EQUIPMENT REQUIRED TO INSTALL A COMPLETE ELECTRICAL SYSTEM AS INDICATED ON THESE DRAWINGS AND AS SPECIFIED.
 - REFER TO ELECTRICAL CONNECTION SCHEDULE FOR CONDUIT, WIRING, COPD, DISCONNECT REQUIREMENTS.
 - VERIFY EQUIPMENT SIZES AND POWER REQUIREMENTS FOR EQUIPMENT PROVIDED BY OTHERS.
 - ELECTRICAL CONDUITS AND JUNCTION BOXES IN FINISHED SPACES SHALL BE CONCEALED. COORDINATE WITH OTHER TRADES AND USE CHASES AND CEILING SPACES.
 - REFER TO MECHANICAL AND PLUMBING PLANS FOR EXACT LOCATION OF HVAC/PLUMBING EQUIPMENT.
 - PROVIDE CONDUIT, WIRE AND J-BOXES FOR CIRCUITING SHOWN. QUANTITY AND SIZES OF J-BOXES TO BE DETERMINED BY CONTRACTOR.
 - ALL WALL-MOUNTED DEVICE HEIGHTS SHALL BE VERIFIED WITH THE ARCHITECT PRIOR TO ROUGH-IN.
 - ALL FURNITURE FEED LOCATIONS TO BE VERIFIED WITH ARCHITECT AND FURNITURE VENDOR PRIOR TO ROUGH-IN.
 - ALL FURNITURE WHIPS SHALL BE TRIMMED TO REDUCE EXCESS WHIP LENGTH.
 - CONTRACTOR SHALL BE RESPONSIBLE FOR REPAIR OF ANY ELECTRICAL CIRCUITS AFFECTED BY CONSTRUCTION. SUCH CIRCUITS WILL BE REPAIRED IMMEDIATELY. THERE WILL BE NO DISRUPTION OF SERVICE OUTSIDE OF CONSTRUCTION ZONE/ AREA.
 - MAXIMUM CIRCUIT DISTANCE WITH #12AWG COPPER WIRE IS 47FT. FOR A 120V 20A CIRCUIT. CONTRACTOR TO UPSIZE WIRES ACCORDINGLY TO ACCOMMODATE VOLTAGE DROP IF CIRCUIT DISTANCE EXCEEDS THE MAXIMUM CIRCUIT DISTANCE NOTED. VOLTAGE DROP SHALL NOT EXCEED 3%.
 - PROVIDE ADDITIONAL J-BOX NEAR PANEL FOR MULTIPLE HOMERUN CIRCUITRY.
 - PROVIDE G.F.C.I. TYPE RECEPTACLE(S) OR RECEPTACLE(S) PROTECTED BY A GFCI CIRCUIT BREAKER(S) WHEN RECEPTACLES ARE 50A OR LESS, 150V TO GROUND OR LESS AND ARE LOCATED WITHIN 6-FEET OF ANY SINK OR THERAPEUTIC TUB, LAUNDRY AREA, SERVING ANY DRINKING FOUNTAIN OR VENDING MACHINE, WITHIN ANY KITCHEN SPACE, LOCKER ROOM AREA, GARAGE AND BATHROOM SPACE AND/OR LOCATED OUTDOORS. WHERE RECEPTACLES ARE NOT READILY ACCESSIBLE, PROVIDE GFCI CIRCUIT BREAKER(S) TO PROTECT THE RESPECTIVE BRANCH CIRCUIT AND PROVIDE ADDITIONAL NEUTRAL CONDUCTORS IN THE BRANCH CIRCUITING AS REQUIRED TO ENSURE PROPER GFCI FUNCTION.



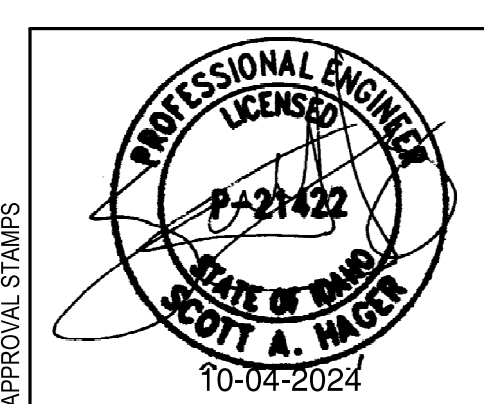
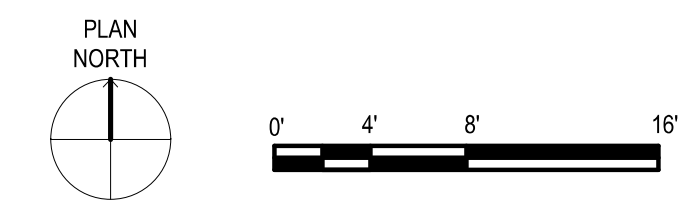
PROJECT:
Elmore Co Admin Bldg - Tenant Improvement

PROJECT ADDRESS:
ELMORE COUNTY PUBLIC SERVICES BUILDING 1

OWNER:
**SHELLEY ESSL, COUNTY CLERK
 ELMORE COUNTY
 150 SOUTH 4TH EAST, SUITE 3
 MOUNTAIN HOME, IDAHO 83647**



1 ELECTRICAL POWER PLAN - ROOF
 1/8" = 1'-0"



APPROVAL STAMPS

MARK	DATE	DESCRIPTION
1	10/06/24	ADD-1

REVISIONS

MARK	DATE	DESCRIPTION
------	------	-------------

ISSUE INFORMATION

MARK	DATE	DESCRIPTION
A	09/06/2024	PERMIT/BID SET

PROJECT NO.: US0027344.2784
PRINCIPAL IN CHARGE: KH
PROJECT MANAGER: RS
OWNER APPROVAL:

SHEET TITLE
ELECTRICAL POWER PLAN - ROOF

SHEET NO.
E-202

PERMIT/BID SET - 9/16/2024

(E) BRANCH: PANEL A

Location: IT EQUIP 138B
Main Bus: 100 A
MCB: MLO
Voltage: 120/208 Wye
AIC Rating: 10K

Fed From: PANEL F
Wires: 4#10+GND
Enclosure: NEMA 1
Bus Type: CU
Mounting: SURFACE

Neutral Bus: YES
Ground Bus: YES
Isolated Ground Bus: NO
200% Neutral: NO
Feed Through Lugs: NO

Table with columns: CKT, Circuit Description, Load Classification, Trip, Poles, A, B, C, Poles, Trip, Load Classification, Circuit Description, CKT. Lists various equipment like OPEN OFFICE 124 RACK, GENERAL LIGHTING, etc.

PANEL A LOAD SUMMARY

Summary table for Panel A with columns: Load Classification, Connected Load, Demand Factor, Estimated Demand, Panel Totals. Totals: 6980 VA, 59 A, 64 A.

Notes: *See Demand Factor Table

(E) BRANCH: PANEL B

Location: FACILITIES (STORAGE) 141
Main Bus: 225 A
MCB: MLO
Voltage: 120/208 Wye
AIC Rating: 10K

Fed From: PANEL F
Wires: 4#10+GND
Enclosure: NEMA 1
Bus Type: CU
Mounting: SURFACE

Neutral Bus: YES
Ground Bus: YES
Isolated Ground Bus: NO
200% Neutral: NO
Feed Through Lugs: NO

Table with columns: CKT, Circuit Description, Load Classification, Trip, Poles, A, B, C, Poles, Trip, Load Classification, Circuit Description, CKT. Lists various equipment like MEN'S RESTROOM, CLASSROOM 149 LTG, etc.

PANEL B LOAD SUMMARY

Summary table for Panel B with columns: Load Classification, Connected Load, Demand Factor, Estimated Demand, Panel Totals. Totals: 6120 VA, 51 A, 64 A.

Notes: *See Demand Factor Table

(E) BRANCH: PANEL D

Location: FACILITIES (STORAGE) 141
Main Bus: 100 A
MCB: MLO
Voltage: 120/208 Wye
AIC Rating: 10K

Fed From: PANEL M
Wires: 4#2+GND
Enclosure: NEMA 1
Bus Type: CU
Mounting: SURFACE

Neutral Bus: YES
Ground Bus: YES
Isolated Ground Bus: NO
200% Neutral: NO
Feed Through Lugs: NO

Table with columns: CKT, Circuit Description, Load Classification, Trip, Poles, A, B, C, Poles, Trip, Load Classification, Circuit Description, CKT. Lists various equipment like RECEPTION 102, OPEN OFFICE 136, etc.

PANEL D LOAD SUMMARY

Summary table for Panel D with columns: Load Classification, Connected Load, Demand Factor, Estimated Demand, Panel Totals. Totals: 3600 VA, 31 A, 34 A.

Notes: *See Demand Factor Table

(E) BRANCH: PANEL G

Location: FACILITIES (STORAGE) 141
Main Bus: 200 A
MCB: 150 A
Voltage: 120/208 Wye
AIC Rating: 10K

Fed From: PANEL M
Wires: 4#10+1#6GND
Enclosure: NEMA 1
Bus Type: CU
Mounting: SURFACE

Neutral Bus: YES
Ground Bus: YES
Isolated Ground Bus: NO
200% Neutral: NO
Feed Through Lugs: NO

Table with columns: CKT, Circuit Description, Load Classification, Trip, Poles, A, B, C, Poles, Trip, Load Classification, Circuit Description, CKT. Lists various equipment like MISC WORK ROOM 144, WAITING 159, etc.

PANEL G LOAD SUMMARY

Summary table for Panel G with columns: Load Classification, Connected Load, Demand Factor, Estimated Demand, Panel Totals. Totals: 5180 VA, 44 A, 40 A.

Notes: *See Demand Factor Table

(E) BRANCH: PANEL F

Location: JAN. CLOS. 138A
Main Bus: 400 A
MCB: MLO
Voltage: 120/208 Wye
AIC Rating: 10K

Fed From: PANEL M
Wires: 4#10+GND
Enclosure: NEMA 1
Bus Type: CU
Mounting: SURFACE

Neutral Bus: YES
Ground Bus: YES
Isolated Ground Bus: NO
200% Neutral: NO
Feed Through Lugs: NO

Table with columns: CKT, Circuit Description, Load Classification, Trip, Poles, A, B, C, Poles, Trip, Load Classification, Circuit Description, CKT. Lists various equipment like PANEL E, CONFERENCE 365, etc.

PANEL F LOAD SUMMARY

Summary table for Panel F with columns: Load Classification, Connected Load, Demand Factor, Estimated Demand, Panel Totals. Totals: 17960 VA, 150 A, 169 A.

Notes: *See Demand Factor Table

(E) BRANCH: PANEL E

Location: JAN. CLOS. 138A
Main Bus: 100 A
MCB: MLO
Voltage: 120/208 Wye
AIC Rating: 10K

Fed From: PANEL F
Wires: 4#2+GND
Enclosure: NEMA 1
Bus Type: CU
Mounting: SURFACE

Neutral Bus: YES
Ground Bus: YES
Isolated Ground Bus: NO
200% Neutral: NO
Feed Through Lugs: NO

Table with columns: CKT, Circuit Description, Load Classification, Trip, Poles, A, B, C, Poles, Trip, Load Classification, Circuit Description, CKT. Lists various equipment like Spare, IT EQUIP 335, etc.

PANEL E LOAD SUMMARY

Summary table for Panel E with columns: Load Classification, Connected Load, Demand Factor, Estimated Demand, Panel Totals. Totals: 4860 VA, 41 A, 48 A.

Notes: *See Demand Factor Table

(E) MAIN: PANEL M

Location: IT EQUIP 138B
Main Bus: 800 A
MCB: MLO
Voltage: 120/208 Wye
AIC Rating: 10K

Fed From: (2) 4#500CMIL+GND
Wires: 4#500CMIL+GND
Enclosure: NEMA 1
Bus Type: CU
Mounting: SURFACE

Neutral Bus: YES
Ground Bus: YES
Isolated Ground Bus: NO
200% Neutral: NO
Feed Through Lugs: NO

Table with columns: CKT, Circuit Description, Load Classification, Trip, Poles, A, B, C, Poles, Trip, Load Classification, Circuit Description, CKT. Lists various equipment like Spare, RTU(E), etc.

PANEL M LOAD SUMMARY

Summary table for Panel M with columns: Load Classification, Connected Load, Demand Factor, Estimated Demand, Panel Totals. Totals: 30120 VA, 252 A, 231 A.

Notes: *See Demand Factor Table

(E) BRANCH: PANEL RTU

Location:
Main Bus: 225 A
MCB: MLO
Voltage: 120/208 Wye
AIC Rating: 10K/AIC

Fed From: PANEL M
Wires: 4#10+GND
Enclosure: NEMA 3R
Bus Type: CU
Mounting: SURFACE

Neutral Bus: YES
Ground Bus: YES
Isolated Ground Bus: NO
200% Neutral: NO
Feed Through Lugs: NO

Table with columns: CKT, Circuit Description, Load Classification, Trip, Poles, A, B, C, Poles, Trip, Load Classification, Circuit Description, CKT. Lists various equipment like Spare, RTU 1, etc.

PANEL RTU LOAD SUMMARY

Summary table for Panel RTU with columns: Load Classification, Connected Load, Demand Factor, Estimated Demand, Panel Totals. Totals: 1180 VA, 10 A, 10 A.

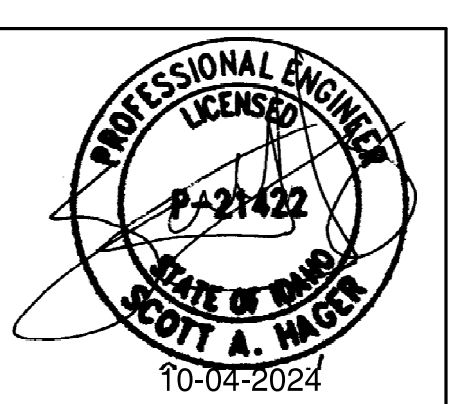
Notes: *See Demand Factor Table



PROJECT:
ELMORE Co Admin Bldg -
Tenant Improvement

PROJECT ADDRESS:
ELMORE COUNTY PUBLIC
SERVICES BUILDING 1

OWNER:
SHELLEY ESSL, COUNTY CLERK
ELMORE COUNTY
150 SOUTH 4TH EAST, SUITE 3
MOUNTAIN HOME, IDAHO 83647



1 10/04/24 ADD-1
MARK DATE DESCRIPTION
REVISIONS

A 09/06/2024 PERMIT/BID SET
MARK DATE DESCRIPTION
ISSUE INFORMATION

PROJECT NO.:
PRINCIPAL IN CHARGE:
PROJECT MANAGER:
OWNER APPROVAL:

SHEET TITLE
ELECTRICAL PANEL
SCHEDULES

SHEET NO.
E-701

COPYRIGHT GGLO. ALL RIGHTS RESERVED.
ORIGINAL SHEET SIZE IS 36"x48"

PERMIT/BID SET - 9/16/2024



WSP USA Inc.
1444 S Entertainment Ave., Suite 300
Boise, ID 83709
208-563-8110
wsp.com

PROJECT:
**Elmore Co Admin Bldg -
Tenant Improvement**

PROJECT ADDRESS:
**ELMORE COUNTY PUBLIC
SERVICES BUILDING 1**

OWNER:
**SHELLEY ESSL, COUNTY CLERK
ELMORE COUNTY
150 SOUTH 4TH EAST, SUITE 3
MOUNTAIN HOME, IDAHO 83647**



APPROVAL STAMPS

REVISIONS

MARK	DATE	DESCRIPTION

ISSUE INFORMATION

MARK	DATE	DESCRIPTION

PROJECT NO.: **US0027344.2784**
PRINCIPAL IN CHARGE: **KH**
PROJECT MANAGER: **RS**
OWNER APPROVAL:

SHEET TITLE
**ELECTRICAL LUMINAIRE
SCHEDULE**

SHEET NO.
E-702

ELECTRICAL LUMINAIRE FIXTURE SCHEDULE

TYPE	DESCRIPTION	HOUSING	REFLECTOR	FIXTURE FINISH	MOUNTING	COLOR TEMP.	LAMP	NOMINAL LUMENS	VA	DRIVER/XFRM	VOLTAGE	MANUFACTURER	CATALOG NUMBER
F1	1'x4' LED TYPE FLAT PANEL TROFFER, NON-AIR HANDLING, ON-BOARD OCCUPANCY SENSOR	LOW PROFILE METAL FRAME	NONE	WHITE FINISH	RECESSED IN GRID	3500K 80 CRI	LED	3200 (3331 DELIVERED)	29	LED DRIVER 0-10V DIMMING TO 1%	120	LITHONIA	#CPX 1X4 AL07 SWW7 M4
F1E	1'x4' LED TYPE FLAT PANEL TROFFER, NON-AIR HANDLING, ON-BOARD OCCUPANCY SENSOR, WITH EMERGENCY DRIVER	LOW PROFILE METAL FRAME	NONE	WHITE FINISH	RECESSED IN GRID	3500K 80 CRI	LED	3200 (3331 DELIVERED)	29	LED DRIVER 0-10V DIMMING TO 1%	120	LITHONIA	#CPX 1X4 AL07 SWW7 M4
F2	2'x4' LED TYPE FLAT PANEL TROFFER, NON-AIR HANDLING, ON-BOARD OCCUPANCY SENSOR	LOW PROFILE METAL FRAME	NONE	WHITE FINISH	RECESSED IN GRID	3500K 80 CRI	LED	6000 (5892 DELIVERED)	42	LED DRIVER 0-10V DIMMING TO 1%	120	AQUITY BRANDS OR EQUAL BY COOPER LIGHTING AND DAY-BRITE	#CPX 2X4 AL08 SWW7 M2
F2E	2'x4' LED TYPE FLAT PANEL TROFFER, NON-AIR HANDLING, ON-BOARD OCCUPANCY SENSOR, WITH EMERGENCY DRIVER	LOW PROFILE METAL FRAME	NONE	WHITE FINISH	RECESSED IN GRID	3500K 80 CRI	LED	6000 (5892 DELIVERED)	42	LED DRIVER 0-10V DIMMING TO 1%	120	AQUITY BRANDS OR EQUAL BY COOPER LIGHTING AND DAY-BRITE	#CPX 2X4 AL08 SWW7 M2
F3	1'x4' LED TYPE FLAT PANEL TROFFER, NON-AIR HANDLING, ON-BOARD OCCUPANCY SENSOR	LOW PROFILE METAL FRAME	NONE	WHITE FINISH	SURFACE MOUNTED	3500K 80 CRI	LED	3200 (3331 DELIVERED)	29	LED DRIVER 0-10V DIMMING TO 1%	120	AQUITY BRANDS OR EQUAL BY COOPER LIGHTING AND DAY-BRITE	#CPX 1X4 AL07 SWW7 M4
F4	2'x4' LED TYPE FLAT PANEL TROFFER, NON-AIR HANDLING, ON-BOARD OCCUPANCY SENSOR	LOW PROFILE METAL FRAME	NONE	WHITE FINISH	SURFACE MOUNTED	3500K 80 CRI	LED	6000 (5892 DELIVERED)	42	LED DRIVER 0-10V DIMMING TO 1%	120	AQUITY BRANDS OR EQUAL BY COOPER LIGHTING AND DAY-BRITE	#CPX 2X4 AL08 SWW7 M2
F5	PENDANT MOUNTED LED LINEAR, 80% UPLIGHT, 20% DOWNLIGHT,	LOW PROFILE METAL FRAME	NONE	WHITE FINISH	PENDANT MOUNTED	3500K 80 CRI	LED	1000 LUMENS PER FOOT	29	LED DRIVER 0-10V DIMMING TO 1%	120	AQUITY BRANDS OR EQUAL BY COOPER LIGHTING AND DAY-BRITE	#GRAD LSL MSL8 80CRI 35K 80/20 ID1000LUMF MIN1 120
F6	4' LED TYPE INDUSTRIAL WRAP AROUND	LOW PROFILE METAL FRAME	NONE	WHITE FINISH	CHAIN HANG AT 8'-0" AFF	3500K 80 CRI	LED	6000 (5892 DELIVERED)	42	LED DRIVER 0-10V DIMMING TO 1%	120	AQUITY BRANDS OR EQUAL BY COOPER LIGHTING AND DAY-BRITE	#FMLWL 48 8 35 MVOLT
D1	EXTERIOR RECESSED 6" LED DOWNLIGHT, MEDIUM DISTRIBUTION, U.L. LISTED FOR WET LOCATIONS, COVERED CEILING	GALVANIZED STEEL	MEDIUM DISTRIBUTION	WHITE FINISH	CEILING RECESSED	3500K 80 CRI	LED	1500 (1514 DELIVERED)	18	LED DRIVER 0-10V DIMMING TO 1%	120	AQUITY BRANDS OR EQUAL BY COOPER LIGHTING AND DAY-BRITE	#LDN6 35_15 L06AR LS
D1E	EXTERIOR RECESSED 6" LED DOWNLIGHT, MEDIUM DISTRIBUTION, U.L. LISTED FOR WET LOCATIONS, COVERED CEILING, WITH EMERGENCY DRIVER.	GALVANIZED STEEL	MEDIUM DISTRIBUTION	WHITE FINISH	CEILING RECESSED	3500K 80 CRI	LED	1500 (1514 DELIVERED)	18	LED DRIVER 0-10V DIMMING TO 1%	120	AQUITY BRANDS OR EQUAL BY COOPER LIGHTING AND DAY-BRITE	#LDN6 35_15 L06AR LS
X1	EDGE LIT LED EXIT SIGN - SINGLE SIDED, BRUSHED ALUMINUM, GREEN ON CLEAR, ARROWS AS NOTED ON PLANS			BRUSHED ALUMINUM	CEILING RECESSED		LED		1		120	AQUITY BRANDS OR EQUAL BY COOPER LIGHTING AND DAY-BRITE	#LOC 1 G
X2	EDGE LIT LED EXIT SIGN - DOUBLE SIDED, BRUSHED ALUMINUM, GREEN ON CLEAR, ARROWS AS NOTED ON PLANS			BRUSHED ALUMINUM	CEILING RECESSED		LED		1		120	AQUITY BRANDS OR EQUAL BY COOPER LIGHTING AND DAY-BRITE	#LOC 2 G

PERMIT/BID SET - 9/6/2024

E

D

C

B

A

1

2

3

4

5

6

1

2

3

4

5

6