

ELMORE COUNTY
PLANNING AND ZONING COMMISSION

520 East 2nd South Street
Mountain Home, ID 83647
Telephone 208-587-2130, ext. 502 Fax 208-587-2120

NOTICE OF PUBLIC HEARING

NOTICE IS HEREBY GIVEN pursuant to the laws of the State of Idaho and Ordinances of Elmore County, that the Elmore County Planning and Zoning Commission will hold a PUBLIC HEARING at 7:00 p.m. on Wednesday, October 7, 2015 in the War Memorial Hall (American Legion) 515 East 2nd South Street, Mountain Home, Idaho, to accept testimony and consider an application from Dan and Kimberlee Jo West for a Conditional Use Permit for an agriculture building in the Air Base Hazard Zone. Case Number: CUP-2015-13. The site is located in the SE1/4 NE1/4 Section 26, Township 4S, Range 5E, B.M. A common way of locating the property is from Air Base Road turn south on Highway 51, travel 8 miles, turn right on SW Beet Dump Road, travel 3.5 miles, turn right at sharp corner before cattle guard, travel 1.5 miles, property at end of road.

This application may be reviewed prior to the hearing in the Land Use and Building Department during regular business hours. Any and all interested persons shall be heard at said public hearing and the public is welcome and invited to submit testimony. Anyone who wishes to testify but is unable to attend may submit written testimony prior to the hearing by sending it to Elmore County Land Use and Building Department, 520 East 2nd South Street, Mountain Home, Idaho, 83647. Written testimony must be received by 5:00 p.m. on Friday, September 25, 2015.

The Elmore County Clerk is responsible for ensuring compliance with the American Disabilities Act (ADA) of 1993, the Elmore County Clerk is responsible ADA coordinator. Provisions will be made for persons with disabilities who are unable to attend this hearing. A grievance procedure is available from M. Bate, Elmore County Courthouse, in accordance with the ADA regulations.

One publication: Wednesday, September 16, 2015


Alan Christy, Director
Elmore County Land Use and Building Department
AC:bsb

Legend

Zoning

- ABCZ
- ABZ
- AG
- C2
- CITY
- M1
- M2
- PM-MT
- R

County Boundary

Interstate

Road

Old Highway 36

Old Highway 78

Highway 67

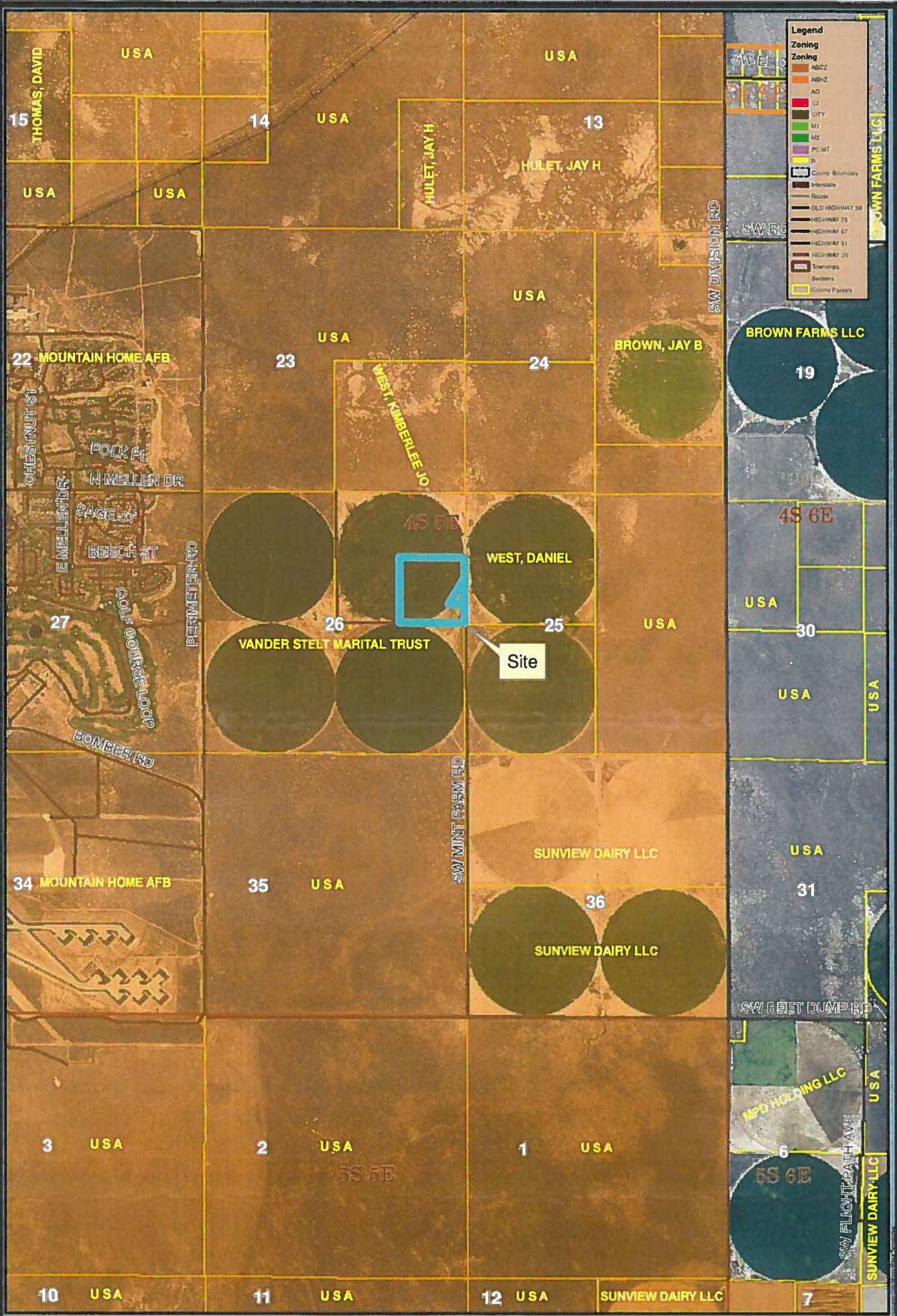
Highway 51

Highway 26

Trappings

Sectors

County Parcels



CUP-2015-13

