

GLENNS FERRY AREA OF CITY IMPACT MAP ORDINANCE

ELMORE COUNTY ORDINANCE NO. 95-4

AN ORDINANCE OF ELMORE COUNTY, IDAHO, SETTING FORTH A PURPOSE; ESTABLISHING AN AREA OF CITY IMPACT MAP; DEFINING THE BOUNDARIES OF THE GLENNS FERRY AREA OF CITY IMPACT; ESTABLISHING PROCEDURAL STANDARDS FOR MODIFICATION OF THE BOUNDARIES OF THE AREA OF CITY IMPACT; PROVIDING AN EFFECTIVE DATE; AND REPEALING ALL ORDINANCES IN CONFLICT HEREWITH.

WHEREAS, Idaho Code § 67-6526 allows the establishment of an Area of City Impact to accomplish coordinated planning between city and county governments, and;

WHEREAS, representatives of Elmore County and the City of Glenss Ferry have met to develop mutually acceptable terms which will govern an Area of City Impact, and;

WHEREAS, the governing bodies of these respective local governments have determined that the establishment of a mutually acceptable Area of City Impact will benefit the health, safety and welfare of their respective constituencies;

NOW, THEREFORE, BE IT ORDAINED BY THE CHAIRMAN AND THE BOARD OF COUNTY COMMISSIONERS OF ELMORE COUNTY, IDAHO:

SECTION 1. STATEMENT OF PURPOSE. The purpose of this ordinance shall be to establish the physical boundaries of an Area of City Impact for the City of Glenss Ferry in cooperation with Elmore County.

SECTION 2. ESTABLISHMENT OF AREA OF CITY IMPACT. The Area of City Impact defined by the boundaries established in this Ordinance is hereby established as an area of shared jurisdiction whereby community planning efforts are undertaken on a cooperative basis. A companion ordinance shall set forth the particular land use regulations which shall govern the defined Area of City Impact.

SECTION 3. BOUNDARIES OF THE AREA OF CITY IMPACT. Pursuant to the above-referenced negotiations, the following described land is, and shall be, unless changed in accordance with the provisions of this Ordinance, the defined Area of City Impact for the City of Glenss Ferry in Elmore County, Idaho:

Range 9 East, Township 5 South  
All of Section 25  
All of Section 36 lying north of the Snake River  
All of Sections 26 and 35 lying east of the Snake River

Range 9 East, Township 6 South  
All of Section 1 lying north of the Snake River

Range 10 East, Township 5 South  
All of Sections 29 and 30  
All of Section 28 and 33 lying west of the Snake River  
All of Sections 31 and 32 lying north of the Snake River

Range 10 East, Township 6 South  
All of Section 6 lying north of the Snake River

A map of the area encompassed by said Area of City Impact is attached to this Ordinance and labeled Attachment A, which attachment is incorporated herein by reference as if set forth in its entirety.

SECTION 4. MODIFICATION OF AREA OF CITY IMPACT BOUNDARIES. The Area of City Impact boundaries established by this Ordinance may be modified by mutual agreement in accordance with the notice and hearing procedures set forth in the Idaho Code at any time. In the absence of mutual agreement to modify the boundaries of the Area of City Impact, either jurisdiction may unilaterally request that the question of boundaries be reopened for negotiations in October of any calendar year. Any such request for change shall be based upon a stated reason or reasons within the scope of the Agreement which shall serve as the basis for any renegotiation. The stated reasons must address specific provisions of the Comprehensive Plan or Land Use Ordinances effective within the Area of City Impact and cite the changed circumstances with respect to any such basis as grounds for renegotiation. No modification of the Area of City Impact boundaries shall be effective unless or until the specific procedures required by this Ordinance and the Idaho Code have been completed and agreement has been reached regarding new terms for the Area of City Impact.


SECTION 5. ENFORCEMENT. The provisions of this Ordinance may be enforced by either Elmore County or the city of Glens Ferry by virtue of legal action initiated to require specific performance with the terms of this Ordinance.

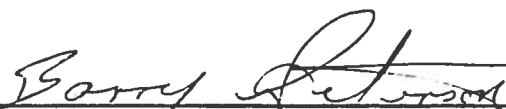
SECTION 6. EFFECTIVE DATE. This Ordinance shall be effective upon its passage and publication according to law.


SECTION 7. REPEAL OF CONFLICTING ORDINANCES. Any ordinance of the Zoning and Development Ordinance of Elmore County or the Comprehensive Plan of Elmore County in conflict with the terms of this Ordinance is hereby repealed to the extent of such conflict.

PASSED by the Board of County Commissioners of Elmore County, Idaho, this 11th day of December, 1995.


APPROVED by the Chairman of the Board of County Commissioners, Elmore County, Idaho, this 11th day of December, 1995.

  
\_\_\_\_\_  
John W. Shrum, Chairman

  
\_\_\_\_\_  
Barry J. Peterson, Commissioner

  
\_\_\_\_\_  
Charles F. Whipple, Commissioner

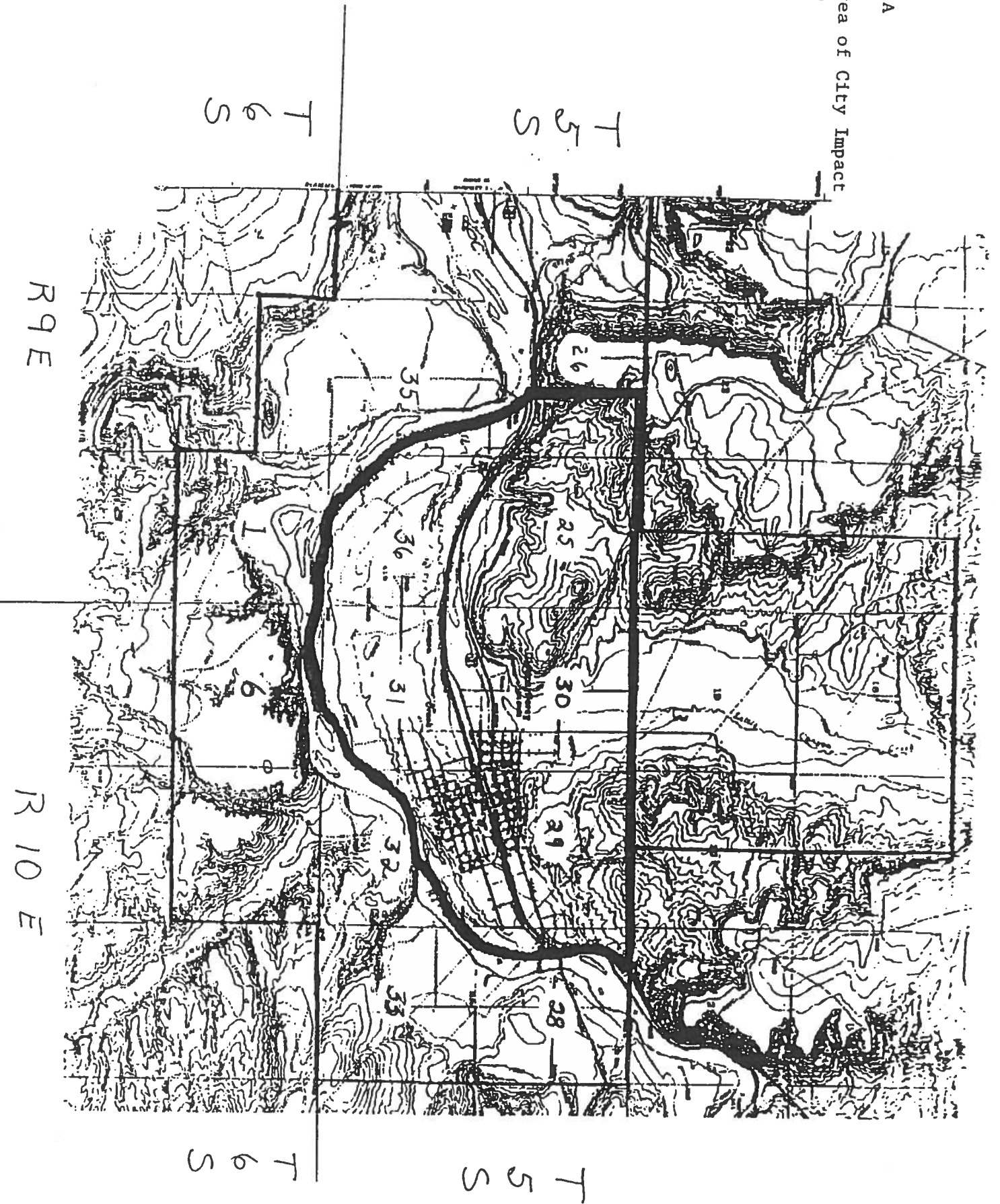
ATTEST:

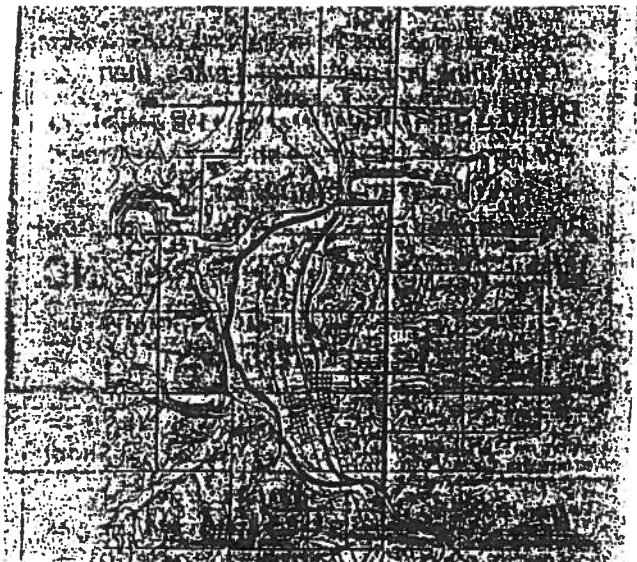
  
\_\_\_\_\_  
Dolores Robison  
Clerk of the Board of County Commissioners

December 20, 1995

1 Publication: \_\_\_\_\_

EXHIBIT A  
Glenns Ferry Area of City Impact  
Map





**Affidavit of Publication**

County of Elmore } ss.  
STATE OF IDAHO }

I, Coleen W. Swenson, do solemnly swear that I am the foreman, or publisher of the

**Mountain Home News**

a weekly newspaper of general circulation, published once a week at MOUNTAIN HOME, IDAHO, that the notice attached hereto and which is a part of publication thereof; was published in said newspaper for

1 consecutive weeks, the first publication having been made on 27<sup>th</sup> day of December, 1995, and the last publication having been made on the 27<sup>th</sup> day of December, 1995; every Wednesday

issue of the paper during the period and time of publication and that the notice was published in the newspaper proper and not in a supplement thereof.

And I further swear that the said MOUNTAIN HOME NEWS has been continuously and uninterruptedly published in said Elmore County during a period of 78 consecutive weeks prior to the first publication of the attached notice.

*Coleen W. Swenson*

Subscribed and sworn to me this 29<sup>th</sup> day of December, 1995

*Brenda J. Jacoby*  
Notary Public

Residing in Mountain Home, Elmore County, Idaho. My commission expires 11-16-98.

**GLENN'S FERRY AREA OF CITY IMPACT MAP ORDINANCE**  
ELMORE COUNTY, IDAHO, SETTING FORTH THE PURPOSE: ESTABLISHING AN AREA OF CITY IMPACT MAP; DEFINING THE BOUNDARIES OF THE GLENN'S FERRY AREA OF CITY IMPACT; ESTABLISHING PROCEDURAL STANDARDS FOR MODIFICATION OF THE BOUNDARIES OF THE AREA OF CITY IMPACT; PROVIDING AN EFFECTIVE DATE; AND REPEALING ALL ORDINANCES IN CONFLICT HEREWITH.  
WHEREAS, Idaho Code...  
WHEREAS, the governing bodies of...  
NOW, THEREFORE, THE BOARD OF COUNTY COMMISSIONERS OF ELMORE COUNTY, IDAHO:  
SECTION 1. STATEMENT OF PURPOSE. The purpose of this ordinance shall be to establish the physical boundaries of an Area of City Impact for the City of Glenn's Ferry in cooperation with Elmore County.  
SECTION 2. ESTABLISHMENT OF AREA OF CITY IMPACT. The Area of City Impact defined by the boundaries established in this Ordinance is hereby established as an area of shared jurisdiction whereby community planning efforts are undertaken on a cooperative basis. A companion ordinance shall set...  
SECTION 3. MODIFICATION OF AREA OF CITY IMPACT BOUNDARIES. The Area of City Impact boundaries established by this Ordinance may be modified by mutual agreement in accordance with the provisions of the Idaho Code...  
SECTION 4. ENFORCEMENT. The provisions of this Ordinance may be enforced by either Elmore County or the City of Glenn's Ferry by virtue of legal action initiated to require specific performance with the terms of this Ordinance.  
SECTION 5. EFFECTIVE DATE. This Ordinance shall be effective upon its passage and publication according to law.  
SECTION 6. REPEAL OF CONFLICTING ORDINANCES. Any ordinance of the County and Commission...



**GLENN'S FERRY AREA OF CITY IMPACT MAP ORDINANCE  
ELMORE COUNTY  
ORDINANCE NO. 95-4**

AN ORDINANCE OF ELMORE COUNTY, IDAHO, SETTING FORTH PURPOSE; ESTABLISHING AN AREA OF CITY IMPACT MAP; DEFINING THE BOUNDARIES OF THE GLENN'S FERRY AREA OF CITY IMPACT; ESTABLISHING PROCEDURAL STANDARDS FOR MODIFICATION OF THE BOUNDARIES OF THE AREA OF CITY IMPACT; PROVIDING AN EFFECTIVE DATE; AND REPEALING ALL ORDINANCES IN CONFLICT HEREWITH.

WHEREAS, Idaho Code 467-6526 allows the establishment of an Area of City Impact to accomplish coordinated planning between city and county government;

AND, representatives of Elmore County and the City of Glenns Ferry have met to develop mutually acceptable terms which will govern an Area of City Impact; and;

WHEREAS, the governing bodies of the respective local governments have determined that the establishment of a mutually acceptable Area of City Impact will benefit the health, safety and welfare of their respective constituents;

NOW, THEREFORE, BE IT ORDAINED BY THE CHAIRMAN AND BOARD OF COUNTY COMMISSIONERS OF ELMORE COUNTY, IDAHO:

**SECTION 1. STATEMENT OF PURPOSE.** The purpose of this ordinance shall be to establish the physical boundaries of an Area of City Impact for the City of Glenns Ferry in cooperation with Elmore County.

**SECTION 2. ESTABLISHMENT OF AREA OF CITY IMPACT.** The Area of City Impact defined by the boundaries established in this Ordinance is hereby established as an area of shared jurisdiction whereby community planning efforts are undertaken on a cooperative basis. A companion ordinance shall set forth the particular land use regulations which shall govern the defined area of City Impact.

**SECTION 3. BOUNDARIES OF AREA OF CITY IMPACT.** Pursuant to the above-referenced negotiations, the following described land is, shall be, unless changed in accordance with the provisions of this Ordinance, the defined Area of City Impact for the City of Glenns Ferry in Elmore County:

Range 9 East, Township 5 South, Section 25; All of Section 26 lying north of the Snake River; All of Sections 26 and 35 lying east of the Snake River. Range 9 East, Township 6 South, All of Section 1 lying north of the Snake River.

Range 10 East, Township 5 South, All of Sections 29 and 30; All of Sections 28 and 23 lying

the Snake River. Range 10 East, Township 6 South, All of Section 6 lying north of the Snake River.

A map of the area encompassed by said Area of City Impact is attached to this Ordinance and labeled Attachment A, which attachment is incorporated herein by reference as if set forth in its entirety.

**SECTION 4. MODIFICATION OF AREA OF CITY IMPACT BOUNDARIES.** The Area of City Impact boundaries established by this Ordinance may be modified by mutual agreement in accordance with the notice and hearing procedures set forth in the Idaho Code at any time. In the absence of mutual agreement to modify the boundaries of the Area of City Impact, either jurisdiction may unilaterally request that the question of boundaries be reopened for negotiations in October of any calendar year. Any such request for change shall be based upon a stated reason or reasons within the scope of the Agreement which shall serve as the basis for any renegotiation. The stated reasons must address specific provisions of the Comprehensive Plan or Land Use Ordinances effective within the Area of City Impact and cite the changed circumstances with respect to any such basis as grounds for renegotiation. No modification of the Area of City Impact boundaries shall be effective unless or until the specific procedures required by this Ordinance and the Idaho Code have been completed and agreement has been reached regarding new terms for the Area of City Impact.

**SECTION 5. ENFORCEMENT.** The provisions of this Ordinance may be enforced by either Elmore County or the city of Glenns Ferry by virtue of legal action initiated to require specific performance with the terms of this Ordinance.

**SECTION 6. EFFECTIVE DATE.** This Ordinance shall be effective upon its passage and publication according to law.

**SECTION 7. REPEAL OF CONFLICTING ORDINANCES.** Any ordinance of the Zoning and Development Ordinance of Elmore County or the Comprehensive Plan of Elmore County in conflict with the terms of this Ordinance is hereby repealed to the extent of such conflict.

PASSED by the Board of County Commissioners of Elmore County, Idaho, this 11th day of December, 1995.

APPROVED by the Chairman of the Board of County Commissioners, Elmore County, Idaho, this 11th day of December, 1995.

John W. Shrum, Chairman  
Barry J. Peterson, Commissioner  
Charles F. Whipple, Commissioner

ATTEST:  
Dolores Robison, Clerk of the Board of County Commissioners  
One publication December 27, 1995.

a weekly newspaper of general circulation, published once a week at MOUNTAIN HOME, IDAHO, that the notice attached hereto and which is a part of publication thereof; was published in said newspaper for

1 consecutive weeks, the first publication having been made on 27<sup>th</sup> day of

December, 1995, and the last publication having been made on the 27<sup>th</sup> day of

December, 1995; every Wednesday

issue of the paper during the period and time of publication and that the notice was published in the newspaper proper and not in a supplement thereof.

And I further swear that the said MOUNTAIN HOME NEWS has been continuously and uninterruptedly published in said Elmore County during a period of 78 consecutive weeks prior to the first publication of the attached notice.

*Charles W. Swanson*

Subscribed and sworn to me this 27<sup>th</sup> day of

December, 1995

Notary Public

Residing in Mountain Home, Elmore County, Idaho. My commission expires 11-16-98.