

ELMORE COUNTY

PLANNING AND ZONING COMMISSION

520 East 2nd South Street
Mountain Home, ID 83647
Telephone 208-587-2130, ext. 502 Fax 208-587-2120

NOTICE OF PUBLIC HEARING

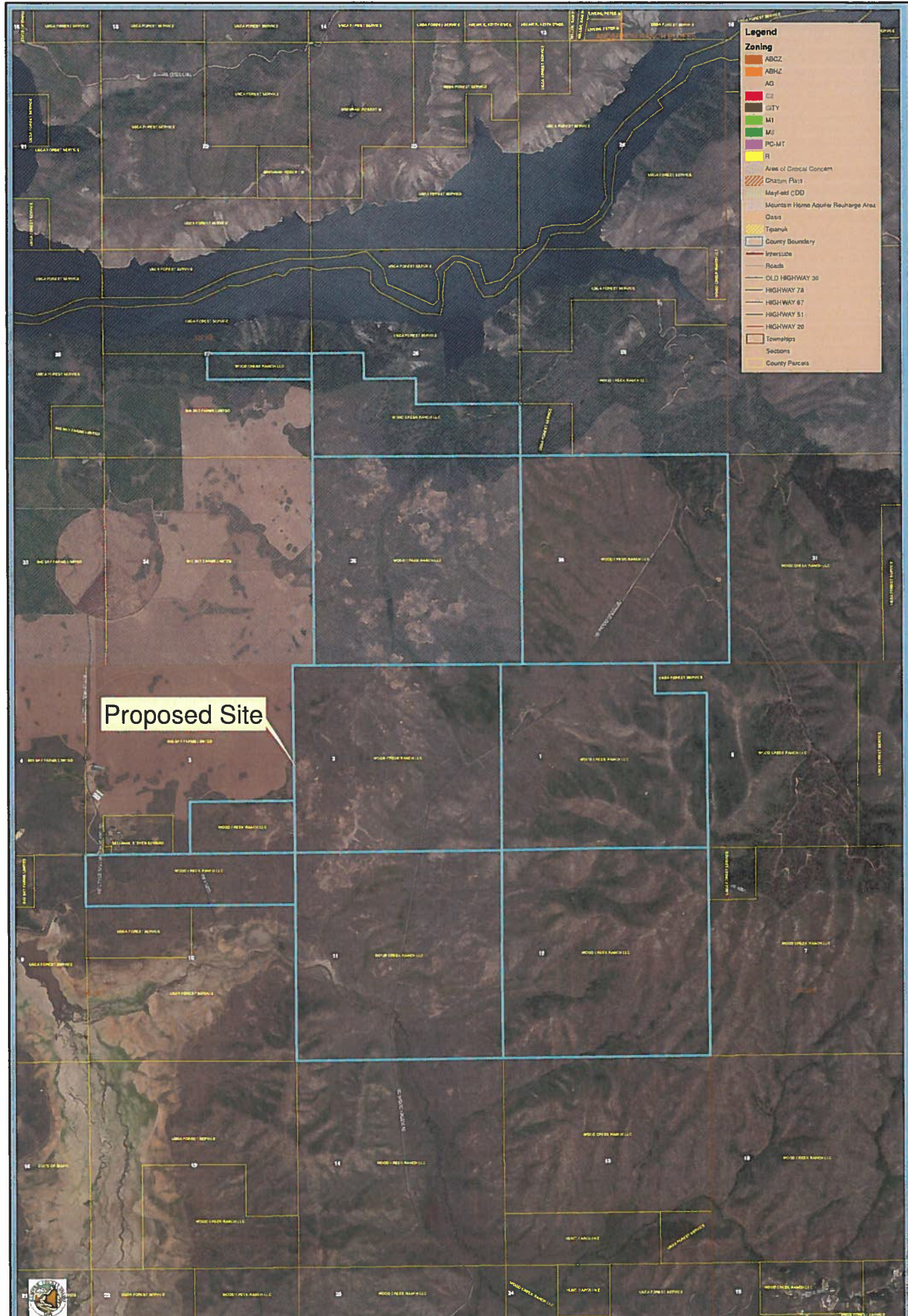
NOTICE IS HEREBY GIVEN pursuant to the laws of the State of Idaho and Ordinances of Elmore County, that the Elmore County Planning and Zoning Commission will hold a PUBLIC HEARING at 7:00 p.m. on Wednesday, June 15, 2016 in the War Memorial Hall (American Legion) 515 East 2nd South Street, Mountain Home, Idaho, to accept testimony and consider an application from Cat Creek Energy, LLC for a Conditional Use Permit for pump storage hydro electrical generating facility in the Agriculture and Area of Critical Concern Overlay Zones. Case Number: CUP-2015-04. The site is located in portions of Sections 26, 27, 35, and 36, Township 1N, Range 9E, B.M. Sections of 1 and 2, Township 1S, Range 9E, B.M. A common way of locating the property is Mountain Home travel US 20 north for 25.4 miles to Wood Creek Road. Center of projects is approximately 3.2 miles north on Wood Creek Road.

This application may be reviewed prior to the hearing in the Land Use and Building Department during regular business hours. Any and all interested persons shall be heard at said public hearing and the public is welcome and invited to submit testimony. Anyone who wishes to testify but is unable to attend may submit written testimony prior to the hearing by sending it to Elmore County Land Use and Building Department, 520 East 2nd South Street, Mountain Home, Idaho, 83647.

The Elmore County Clerk is responsible for ensuring compliance with the American Disabilities Act (ADA) of 1993, the Elmore County Clerk is responsible ADA coordinator. Provisions will be made for persons with disabilities who are unable to attend this hearing. A grievance procedure is available from M. Bate, Elmore County Courthouse, in accordance with the ADA regulations.

One publication: Wednesday, May 25, 2016

Alan Christy, Director
Elmore County Land Use and Building Department
AC:bsb



Legend

Zoning

- ABCZ
- ABHZ
- AG
- CI
- CITY
- M1
- M2
- PC-MT
- R

Area of Critical Concern

Chatum Pass

Mayland CDD

Mountain Home Aquifer Recharge Area

Oasis

Tipanika

County Boundary

Interstate

Roads

OLD HIGHWAY 30

HIGHWAY 78

HIGHWAY 67

HIGHWAY 51

HIGHWAY 20

Townships

Sections

County Parcels

Proposed Site